



2024 Edition

SCOUTMASTER BUCKY

Bugling Merit Badge

SCOUTS PARTICIPATING IN A SCOUTMASTER BUCKY MERIT BADGE OPPORTUNITY (ONLINE OR IN PERSON), PLEASE CONSIDER ALSO USING THE BUGLING MERIT BADGE CLASS PREPARATION PAGE FOR CLARIFICATIONS, INSIGHTS, AND EXPECTATIONS.

<https://scoutmasterbucky.com/merit-badges/bugling/class-prep/>

BUGLING MERIT BADGE WORKBOOK

REQUIREMENT 1: Give a brief history of the bugle.

Notes:

REQUIREMENT 2a: Explain and demonstrate how the bugle makes sound.

Be sure to review the merit badge pamphlet for preparation information on this requirement.

This requirement must be reviewed with your merit badge counselor.

Be sure to bring any work you have done in preparation to share with your merit badge counselor.

Notes:



2024 Edition

SCOUTMASTER BUCKY

Bugling Merit Badge

REQUIREMENT 2a: Explain how the bugle is related to other brass wind instruments.

Notes:

REQUIREMENT 2b: Compose a bugle call for your troop or patrol to signal a common group activity, such as assembling for mealtime or striking a campsite. Play the call that you have composed before your unit or patrol.





2024 Edition

SCOUTMASTER BUCKY

Bugling Merit Badge

REQUIREMENT 3: Sound 10 of the following bugle calls:

REQUIREMENT 4: Explain the use of each of the calls you performed.

FIRST CALL

First Call

♩ = 96



[CLICK HERE TO LISTEN TO FIRST CALL](#)

How is this call used?

REVEILLE

Reveille

♩ = 152



[CLICK HERE TO LISTEN TO FIRST CALL](#)

How is this call used?



2024 Edition

SCOUTMASTER BUCKY

Bugling Merit Badge

ASSEMBLY

Assembly

♩ = 200



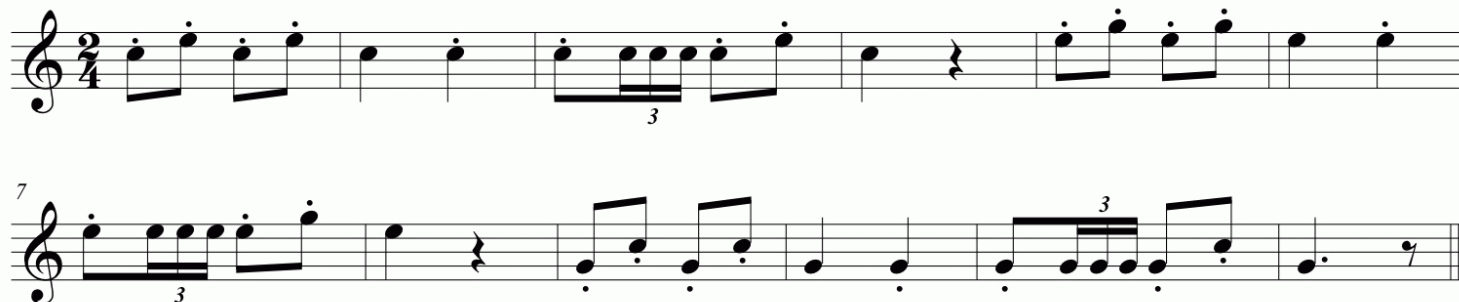
[CLICK HERE TO LISTEN TO FIRST CALL](#)

How is this call used?

MESS

Mess

♩ = 152



[CLICK HERE TO LISTEN TO FIRST CALL](#)

How is this call used?



2024 Edition

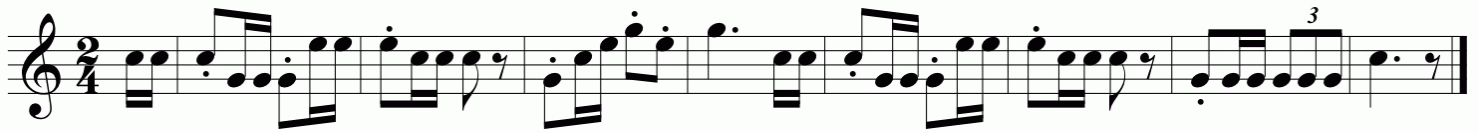
SCOUTMASTER BUCKY

Bugling Merit Badge

DRILL

Drill Call

♩ = 144



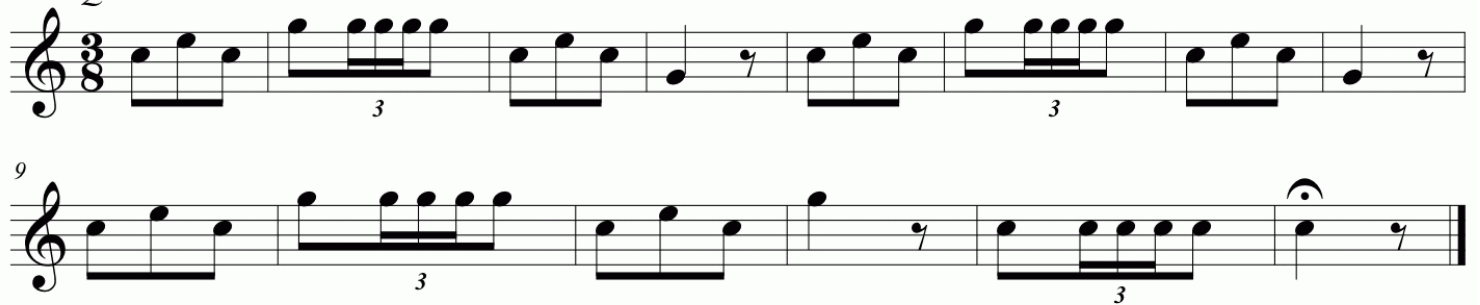
[CLICK HERE TO LISTEN TO FIRST CALL](#)

How is this call used?

FATIGUE

Fatigue

Quick



[CLICK HERE TO LISTEN TO FIRST CALL](#)

How is this call used?



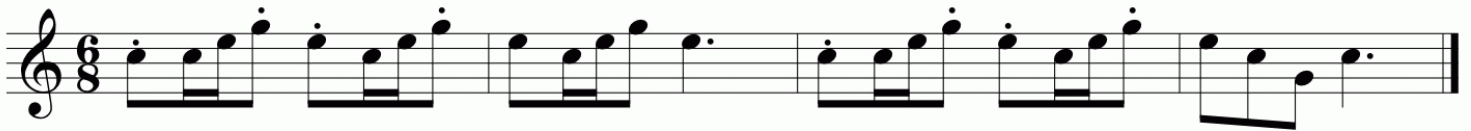
2024 Edition

SCOUTMASTER BUCKY

Bugling Merit Badge

OFFICER'S CALL

Officer's Call



[CLICK HERE TO LISTEN TO FIRST CALL](#)

How is this call used?

RECALL

Recall



[CLICK HERE TO LISTEN TO FIRST CALL](#)

How is this call used?



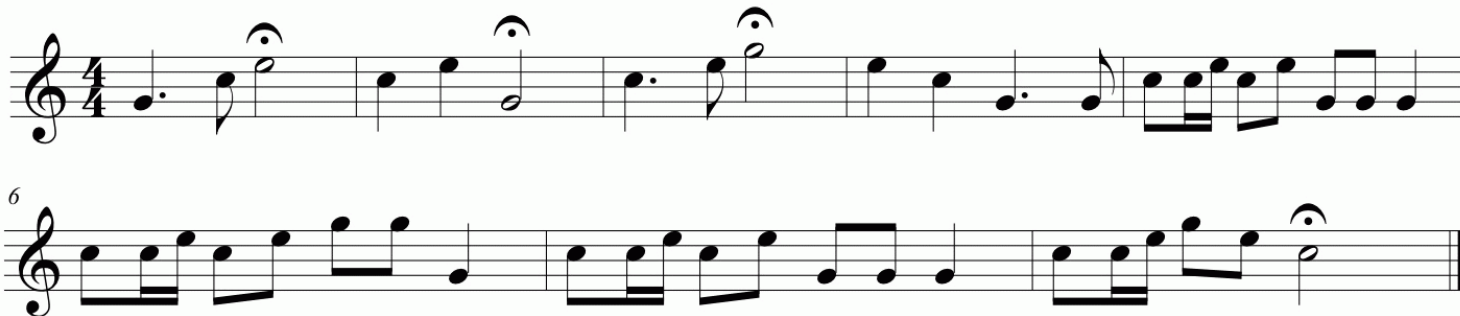
2024 Edition

SCOUTMASTER BUCKY

Bugling Merit Badge

CHURCH CALL

Church Call

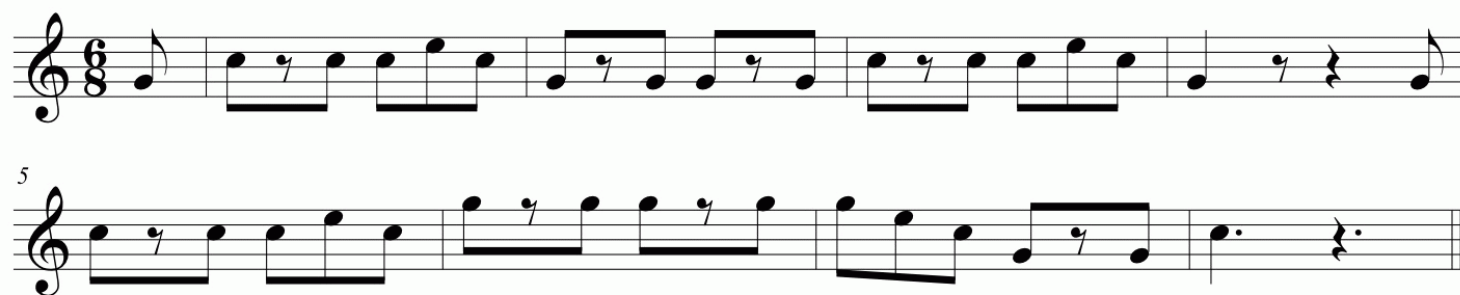


[CLICK HERE TO LISTEN TO FIRST CALL](#)

How is this call used?

SWIMMING CALL

Swimming Call



[CLICK HERE TO LISTEN TO FIRST CALL](#)

How is this call used?



2024 Edition

SCOUTMASTER BUCKY

Bugling Merit Badge

FIRE CALL

Fire Call

Quick

[CLICK HERE TO LISTEN TO FIRST CALL](#)

How is this call used?

RETREAT (EVENING COLORS)

Retreat (Evening Colors)

$\text{♩} = 96$

[CLICK HERE TO LISTEN TO FIRST CALL](#)

How is this call used?



2024 Edition

SCOUTMASTER BUCKY

Bugling Merit Badge

TO THE COLORS

To The Colors

$\text{♩} = 132$

Musical notation for 'To The Colors' in treble clef, common time (C). The piece starts with a dynamic marking of *f* (forte). The notation is divided into three systems. The first system contains measures 1 through 4. The second system starts at measure 5 and includes a 'Fine' marking above the staff. The third system starts at measure 11 and includes a 'D.C. al fine' marking above the staff. The piece concludes with a double bar line.

[CLICK HERE TO LISTEN TO FIRST CALL](#)

How is this call used?

FIRST CALL

Call To Quarters

Musical notation for 'Call To Quarters' in treble clef, common time (C). The notation is divided into two systems. The first system contains measures 1 through 5, with triplets indicated by the number '3' below the notes in measures 4 and 5. The second system starts at measure 6 and includes another triplet in measure 1. The piece concludes with a double bar line.

[CLICK HERE TO LISTEN TO FIRST CALL](#)

How is this call used?



2024 Edition

SCOUTMASTER BUCKY

Bugling Merit Badge

TAPS

Taps

♩ = 40

[CLICK HERE TO LISTEN TO FIRST CALL](#)

How is this call used?

REQUIREMENT 6: Serve as bugler in your troop for three months.

This requirement must be reviewed with your merit badge counselor.

Have your Scoutmaster sign off to validate that you have fulfilled the required tenure as the Troop Bugler.

COUNSELOR APPROVAL: PERHAPS IMPLIED, THIS REQUIREMENT DOES NOT STATE THAT YOU NEED THE COUNSELOR'S APPROVAL AHEAD OF TIME TO RESEARCH AND PREPARE. PLEASE NOTE, AS WITH ANY REQUIREMENT, ACCEPTANCE IS AT THE DISCRETION AND SATISFACTION OF THE MERIT BADGE COUNSELOR.

Troop #:

Dates served as Bugler:

Scoutmaster's Name

Phone

Scoutmaster's Signature

Date

approved